



مركز هميشان لجراحة العمود الفقري والمفاصل بمستشفى الجامعة بالشارقة
HIMCHAN - UHS SPINE & JOINT CENTRE



KOREAN EXPERTISE FOR SPINE AND JOINT

UNIVERSITY HOSPITAL SHARJAH

P.O. Box 72772, University City, Sharjah, UAE, Tel: +971 6 5058555, Fax: +971 6 5058444

[f](#) [@](#) [t](#) [i](#) [v](#) [p](#) @UHSharjah | www.uhs.ae



About Us

University Hospital Sharjah (UHS) has opened Himchan-UHS Joint & Spine Center in collaboration with Himchan Hospital, South Korea, to have our healthcare social responsibilities availing state-of-the-art treatment methodologies in beloved UAE and to be a speciality hub for patients from Middle-east & Africa supporting the medical tourism strategic goals of UAE.

Himchan Hospital is a joint & spine specialized hospital with 8 branches with a combined capacity of 1,200 beds in Korea and it has continuously strived to achieve a 100% surgical success rate through extensive clinical and surgical experiences. The outstanding medical practices and patient-oriented services have developed Himchan Hospital to be a globally recognized joint & spine hospital. Himchan - UHS Joint & Spine Center is the 2nd branch among the 3 of the international Himchan Hospital branches, opened in November 2018 and located in the University Hospital Sharjah.



Why is Himchan Special?

ONE-STOP CLINICAL SERVICE

Allowing patients to have the initial consultation with their own designated surgeon, diagnostic examinations done by the latest medical equipment and machines, 1:1 therapies, surgical operations and post-operational care in one center without being referred to anywhere else. Patients can also register themselves, receive insurance approvals and pay at our Himchan center reception. Our expert team can handle every joint & spine issue from the very simple to the extremely complex problems all in this center.

REASSURING COMPETENCY & PROFESSIONALISM

Himchan - UHS Joint & Spine Centre is a specialized hospital in joint & spine surgeries and has been maintaining 0% post-operational complication and surgery failure rate since the opening. Korea has the greatest number of surgeries compared to any of the countries in the world. Each of our surgeon is very confident with their practices with more than 10 years of experience and also they very well-known surgeons in this specialty.



Spine & Neck Treatment

Our spine surgeons at Himchan are exclusively specialized in endoscopic surgeries and will only leave less than 1cm of a surgical wound. This will lead to less pain and faster recovery after the surgery and most of the patients can be discharged the next day.



Dr. Dae Won Cho
Consultant Spine Surgeon



Dr. Seung Kook Kim
Consultant Spine Surgeon

OFFERED SERVICES:

ENDOSCOPIC SURGERIES

This state-of-the-art surgery is the most preferred type of minimally invasive spine surgery but requires a high level of experience and skills as it uses smaller incisions and causes less injuries in nearby muscles and tissues.

- Percutaneous Endoscopic Lumbar Discectomy (PELD)
- Percutaneous Endoscopic Cervical Foraminotomy & Decompression (PECFD)
- Percutaneous Endoscopic Laminotomy, Flavectomy & Decompression (PELFD)
- Endoscopic 3D Printed Fusion Surgery
- Percutaneous Biportal Endoscopic Surgery (PBES)



MICROSCOPIC SURGERIES

Microscopic surgeries will be offered when endoscopic surgery is not suitable for the conditions of the patients. At Himchan, we have the most advanced surgical techniques and skills to maximize the benefits of the patients and minimize the trauma of the surgery as much as possible.

- Open Lumbar Microdiscectomy (OLM) including Unidirectional Bilateral Foraminotomy (UBF)
- Lumbar Fusion Surgeries
- Anterior Cervical Discectomy & Fusion (ACDF) & Cervical Artificial Disc Replacement (ADR)
- All types of Tumor Removal Surgeries

NON-SURGICAL TREATMENTS

Surgical treatments will not always be the ultimate solution. Various types of non-surgical treatments will be offered to the patients according to their conditions.

- Lumbar Epidural Injection
- Cervical Epidural Injection
- Percutaneous Epidural Neuroplasty (Lumbar) & RACZ Catheter (Cervical)
- Vertebroplasty & Kyphoplasty
- Intradiscal Radiofrequency Coagulation

NEURO-STIMULATOR IMPLANTATION (Treatment for Terminal Stage Pain)

If your condition cannot be treated with the above treatment options due to medical history of multiple open surgeries and chronic pain, Neuro-stimulator implantation can be an option. This provides pain relief by using a small implantable device that blocks the pain signals traveling between the spinal cord and the brain. The new model of neuro-stimulator that we use at Himchan can be remotely controlled by a simple mobile phone-sized device.



Joint & Bone Treatment



Dr. Seung Jun Park
Consultant Orthopedic Surgeon



Dr. Hong Suk Kwak
Consultant Orthopedic Surgeon

OFFERED SERVICES:

KNEE

- Knee Arthroscopic Surgeries
- Minimally Invasive Unilateral Knee Replacement Arthroplasty
- Total Knee Replacement (TKR) & Revision of TKR
- Cartilage Regeneration Surgery

SHOULDER

- Arthroscopic Rotator Cuff Repair
- Tendon Repair & Sport-related Surgery
- Total Shoulder Replacement (TSR) & Reverse TSR



HIP

- Total Hip Replacement Arthroplasty (including Bipolar Hemiarthroplasty)
- Hip Fracture Surgery
- Pelvis and Acetabular Fracture Surgery

WRIST / FINGERS / ELBOW

- Haki Knife Procedure (Non-Invasive) for Trigger Finger
- Total Finger Replacement Arthroplasty
- Wrist & Elbow Arthroscopic Surgery
- Carpal Tunnel Release Surgery
(Microscopic Minimally Invasive - 1cm Incision)

FOOT / ANKLE

- Surgeries for Hallux Valgus
- Foot & Ankle Surgery (Deformity Correction & Arthritis Treatment)

SPORTS RELATED SURGERY

- Injections (Prolotherapy/Hyaluronic Acid)
- Ligament (Knee, Elbow & Ankle) Surgery
- Various Arthroscopic Surgeries for Overuse Syndrome
(E.g. Tennis Elbow, Golfer's Elbow) & Occupation Related Injuries

TRAUMA

- Surgery for Acute Dislocations
- Surgery for Fracture by Accidents & Injuries



Physiotherapy

Our physiotherapy areas are designed to deliver the same scientific physiotherapy system of Himchan hospital in Korea. To enhance privacy and comfort during your visit, we have separated the areas for male and female. Patients can also use our shower rooms after the session and store their belongings in personal lockers.

All our Korean physiotherapists are trained at Himchan Hospital in Korea and keep themselves up to date with the modern technologies and treatment methods. All of them obtained professional certificates for every therapy treatment we provide at Himchan that are internationally known to be the most effective and beneficial. Each patient will have one designated physiotherapist who will develop a personalized treatment plan and provide a systematic therapy through one on one sessions.



Eunjeong Heo
Physiotherapist



Hayoung Jee
Physiotherapist



Jo Won Jin
Physiotherapist



Suhyun Um
Physiotherapist



Yoo Jin Kim
Physiotherapist



Gieun Kim
Physiotherapist

OFFERED SERVICES:



MANUAL (HANDS ON) THERAPY

Our competent physiotherapists from Korea have the full knowledge of the 600 different muscle fibers, 206 bone structures and sympathetic and parasympathetic nervous systems to deliver the treatment through skilled hand movements.



EXERCISE THERAPY

Exercise therapy uses specific movements to relieve symptoms and improve mobility. It focuses on moving the body and its different parts to restore the musculoskeletal function. Our physiotherapists will demonstrate a number of exercises that will significantly increase muscular strength and durability specifically for the unique condition of the patient. Patient will be asked to repeat the exercises under supervision.



ROBOTIC ATT

This is a cutting-edge spine treatment robot that helps patients to reduce or eliminate acute and chronic neck & back pain by decreasing the internal disc pressure. Unlike the traditional decompression machines, Robotic ATT automatically detects the level of decompression required for both neck & spine and also can be adjusted to any direction to elongate the spine. It is reliable and safe even for senior patients and scientifically proven to be highly effective.

OFFERED SERVICES:



REDCORD (NEURAC TREATMENT)

Redcord is a system of slings used in conjunction with the Neurac Method, an active neuromuscular activation treatment approach designed to increase function and facilitate correct movement patterns. It has recently emerged as the most popular treatment option in Korea as it significantly promotes musculoskeletal recovery through pain-free movements and conative exercising using ropes. Our certified physiotherapists will customize the exercising patterns for the physical conditions of each patient.



SHOCK WAVE THERAPY

The shockwave therapy is a modern method used to treat shoulder injuries such as a frozen shoulder and calcification, chronic achilles tendonitis, plantar fasciitis, elbow tendinopathies and myofascial pain syndrome. Expected effects will be blood vessel formation, stimulation of collagen production, dissolution of calcified fibroblasts and trigger points release.



ELECTRICAL THERAPIES

Various types of conventional electrical therapies are available to be used before and after surgeries at Himchan. We have machines and medical equipment for Interferential Current, TENS, CRYO, Electrical Stimulation, Ultra Sound, Laser, Magnetic, Microwave, Air Compression and CPM therapies which will improve pain, accelerate self-healing process and enhance blood circulation. Our physiotherapists will find the most appropriate treatment option according to the symptoms and diagnosis of each patient.

OFFERED SERVICES:



HUBER 360

Huber 360, the most modern physiotherapy machine, is a unique neuromuscular rehabilitation machine with a multi-axis motorized platform with in-built force sensors. Patients can stand on the platform and our physiotherapist will program the most appropriate modules in the system that will give multi-directional stimulation on the targeted area of the body and improve muscular strength, coordination and cognitive ability of the patients.



Clinic

EXPERIENCED KOREAN CONSULTANTS & QUALIFIED ARABIC SPEAKING NURSES

4 Korean consultant surgeons with more than 10 years of experience in their speciality will offer you the best medical advice. A fully qualified Arabic speaking nurse will accompany each patient and assist with in-depth communication during the consultation. All our Korean surgeons can communicate in the English language.

PATIENT RELATIONS & INSURANCE SUPPORT

Our PR officers will welcome you at the reception and provide full support to make the patient journey in the clinic convenient and pleasant from the registration to the payment. Our in-house insurance expert will handle all your insurance approval process and inquiries.

PROCEDURE ROOM

Day procedures will be performed in procedure room located inside of the clinic which is fully equipped with the latest procedure machines and instruments. Patients will be able to receive the interventional procedures if needed without arranging a separate appointment or hospitalization.

Our surgeons use imaging guide machines, ultrasound Scans and C-arm machines, to visualize the procedure site to precisely administer the injection at the exact point as each patient has different anatomy. This will lead to a greater result of the treatment and prevention of possible side effects and complications.



Medical Imaging Services

UHS Medical Diagnostic Imaging Department offers a wide variety of diagnostic examinations for both in-patients and out-patients. Surgeries and other treatment options will only be recommended after determining the cause of pain with a careful examination. Our Imaging Department is fully equipped with the latest models of medical devices and machines. A team of highly skilled Radiologists and Medical Imaging Technologists provides excellent imaging for a full range of examinations.

CT SCAN

A Computerized Tomography (CT) Scan combines a series of X-ray images taken from different angles around the body and uses computer processing to create cross-sectional images (slices) of the bones, blood vessels and soft tissues inside the body. CT scans are performed with and without contrast media depending on the requirements of the referring doctor and the presenting condition of the patient. There are two CT Scans machines available at UHS that can be used to visualize nearly all parts of the body and to diagnose disease or injury as well as to plan medical, surgical or radiation treatment.

DEXA SCAN

DEXA uses a very small dose of ionizing radiation to produce pictures of the inside of the body (usually the lower spine and hips) to measure bone loss. It is commonly used to diagnose osteoporosis, to assess an individual's risk for developing osteoporotic fractures.



C-ARM

A C-Arm machine categorizes as an advanced medical imaging device that works on the basic premise of the X-ray technology. This technology enables the device to provide high-resolution X-ray images in real time so that the surgeons can monitor the progress of the procedure and take decisions accordingly. It is a non-invasive device, making it safe both during and after the screening procedures.

ULTRASOUND SCAN

A diagnostic imaging technique, it is used to create an image of internal body structures such as tendons, muscles, joints, blood vessels and internal organs. Its aim is often to find a source of a disease or to exclude pathology.

MRI SCAN

Magnetic Resonance Imaging (MRI) is a non-invasive test used to diagnose medical conditions. MRI uses a powerful magnetic field, radio waves and a computer to produce detailed pictures of internal body structures. MRI does not use radiation (X-rays), but still, detailed MR images allow doctors to examine the body and detect diseases earlier. Patients will also soon be able to experience Open MRI scanning as we are currently preparing to purchase an Open MRI Machine.



DIGITAL X-RAY

Digital X-ray is undertaken by a team of highly skilled Medical Imaging Technologists offering a full range of images of all body parts to include routine and special views.

LONG FILM X-RAY

Long Film X-ray is used especially for both spine & limbs. Surgeons will be able to see the entire alignment of neck to pelvis or pelvis to ankles. This will lead to more accurate diagnosis and interventions particularly for scoliosis patients.

DIGITAL PORTABLE X-RAY MACHINE

Digital Portable X-ray Machine allows high-quality images to be acquired and sent directly to a Picture Archiving Computer System (PACS) where they are viewed by the Radiologists.



LONG FILM X-RAY



DIGITAL PORTABLE X-RAY MACHINE

Operating Theater

KOREAN OPERATION THEATER (OT) NURSES

Our OT nurses from Korea have extensive knowledge and experience in orthopedic and spine surgeries. They are playing vital roles in theater such as preparing the patient, proficiently assisting surgeons during the surgeries and ensuring sterile and controlled environment throughout the operation. Our competent OT nurses will attend every surgery at Himchan to make sure that the surgery is safe, successful and professional.



Haesoung Lee
Operating Theater Nurse



Hyecheon Bang
Operating Theater Nurse



Hyuna Kim
Operating Theater Nurse

ASEPTIC OPERATING THEATER

Surgical operations will be performed in six operating theaters available in UHS. We are maintaining the zero-infection rate by utilizing anti-septic measures and the air purification system at operating rooms through wearing special aseptic surgical gowns, regular disinfection and using air filters. We have the latest devices including assorted endoscopic surgical instruments.



PATIENT SAFETY PRIORITY SYSTEM

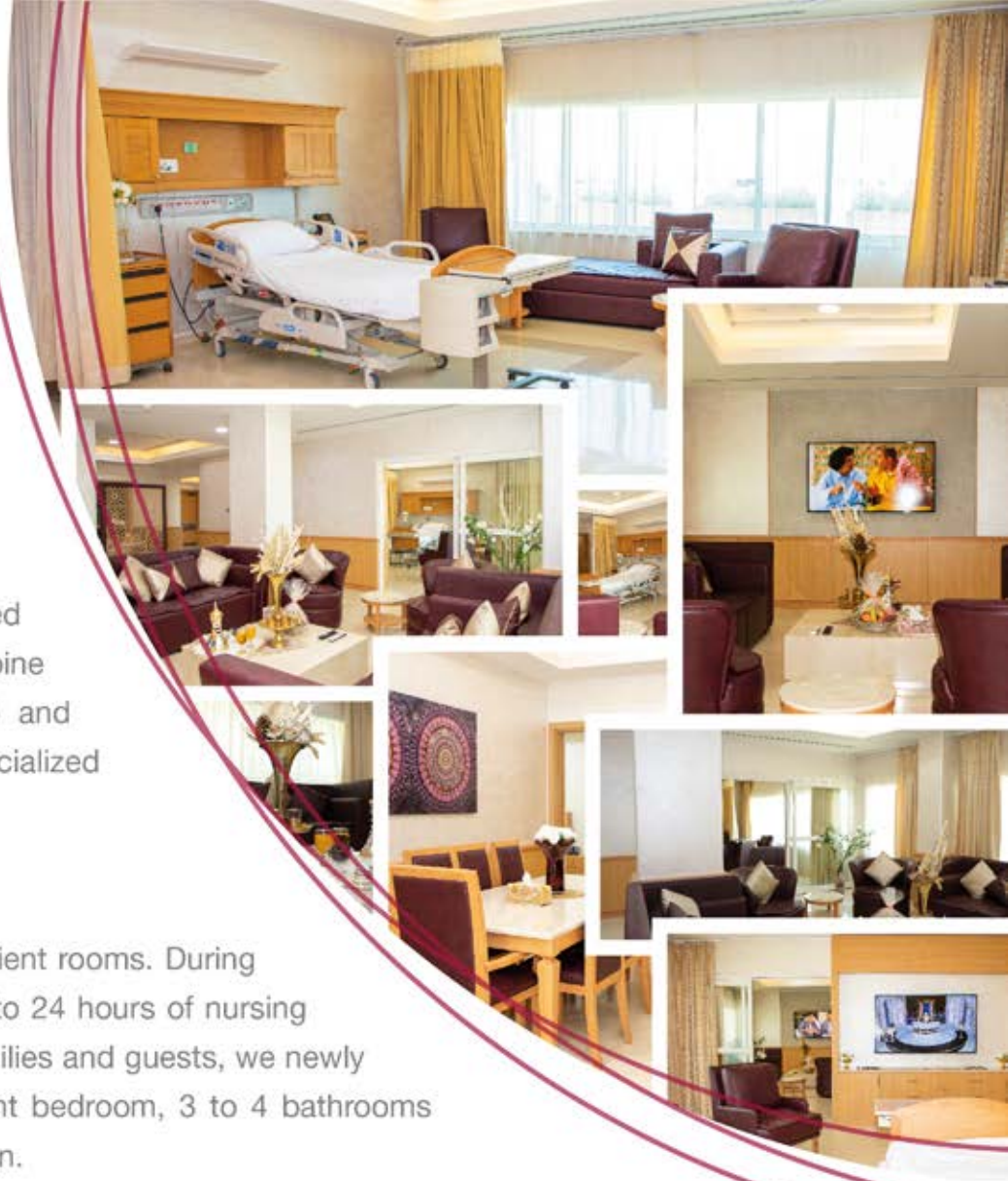
UHS has been JCI Accredited since 2015 and we are strictly maintaining every operation room in accordance with the JCI standards. Operation rooms are regularly reviewed by UHS Facility Management, Biomedical Engineering and Infection Control team to detect any abnormalities and technical problems of the equipment and machines. The operating room will be closed if there is a single minor finding and it will reopen only if the issue is entirely resolved.

WORLD-CLASS EQUIPMENT

All our equipment in operating theater are the most technologically advanced and MOH certified. We have the most suitable items for orthopedic & spine surgeries such as spine specific table, fracture table, arm lift (Trimano) and assorted endoscopic devices, which are hardly found in any of the specialized hospitals.

POST-OPERATIVE IN-PATIENT FACILITY

UHS offers a high standard of accommodation with over 201 private in-patient rooms. During the hospitalization, patients will have daily physician rounding and access to 24 hours of nursing care. To provide a superior experience to our patients and their beloved families and guests, we newly renovated our VIP suites. Each VIP suite has opulent and spacious patient bedroom, 3 to 4 bathrooms including shower facilities, a separate living room, a guest room and a kitchen.



Insurance Affiliates

ADNIC
ADNIC NATIONAL INSURANCE COMPANY
YOUR RELIABLE INSURER

شركة الوطن للتأمين
Al-Buhaira National Insurance Co.

aetna

amity أميتي
Caring for you

ضمان
Daman
خبراء التأمين الصحي

ثقة
thiqa
مقره ضمان دمان

mednet
the preferred choice for healthcare solutions

NAS

الوطنية للحياة والعمارة
NATIONAL LIFE & GENERAL

NEXTCARE
Your Health Managed with Care

NGI

Allianz

SAADA
سعادة
شركة التأمين الوطني للتأمين

neuron

شركة عنات للتأمين
Oman Insurance Company

شركة الفضة للتأمين
Al Khazne Insurance Company

Alico

سايكو
SAICO

المظلة فينلنكر مانجمنت
ALMADALLAH
HEALTHCARE MANAGEMENT

ENAYA
INSURANCE

NOW
HEALTH INTERNATIONAL

Aafiya
Managing your care process

AXA

Whealth
International





Our dedicated team is ready to provide comforting and caring medical services here in
Himchan – UHS Joint and Spine Center.

You and your family are our top priority, so please contact our center if you have questions or need assistance.